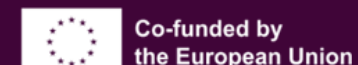




# Transforming cardiovascular care through innovation and collaboration



This project is supported by the Innovative Health Initiative Joint Undertaking (IHI JU) under grant agreement N° 101194778. The JU receives support from the European Union's Horizon Europe research and innovation programme and COCIR, EFPIA, Europa Bio, MedTech Europe, and Vaccines Europe.

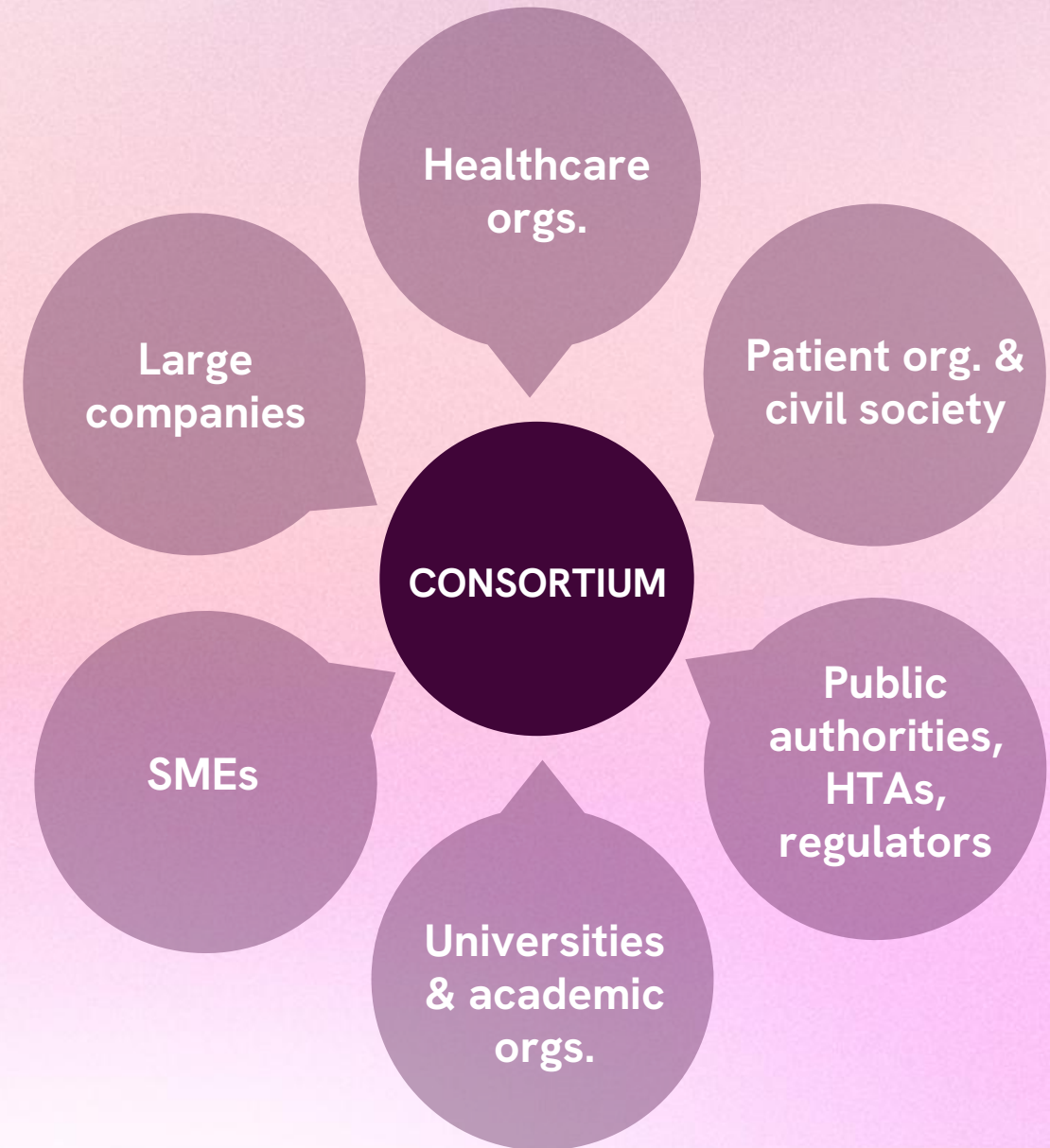
Funded by the European Union, the private members, and those contributing partners of the IHI JU. Views and opinions expressed are however those of the author(s) only and do not necessarily reflect those of the aforementioned parties. Neither of the aforementioned parties can be held responsible for them.

# IHI public-private partnership



Co-funded by the **European Union (EC)** and **Healthcare industry associations.**

Every project is formed by a **collaborative public-private partnership consortium** reflecting the integrative and cross-sectorial nature of the initiative.



## IHI aims to...

- ✓ Deliver safe, effective health innovations that cover the entire spectrum of care, particularly in areas where there is an unmet public health need
- ✓ Turn health research and innovations into real benefits for patients and society
- ✓ Focus on digital health, personalized medicine, AI, medical devices, and system innovation
- ✓ Make Europe's health industries globally competitive



## What is GRACE?

GRACE is one of the **most ambitious cardiovascular innovation** projects in Europe, funded by the **Innovative Health Initiative (IHI)**

This **public-private partnership** brings together **27 partners from 11 countries**: hospitals, universities, research centers, patient associations, and leading MedTech companies.

*Together, we aim to drive a new era of cardiovascular care*

# Our mission

To revolutionize the way cardiovascular diseases are diagnosed, managed and followed up





Through cutting-edge technologies and collaborative models, GRACE seeks to:

- ✓ Improve patient outcomes and quality of life
- ✓ Empower healthcare professionals with better tools
- ✓ Strengthen the sustainability of healthcare systems

# The challenge

**Cardiovascular disease** remains the dominant challenge for public health worldwide, combining **high mortality with substantial healthcare costs.**

Key gaps persist:

-  Many conditions are late/under-diagnosed
-  Care pathways are fragmented and inconsistent
-  Risk prediction tools are limited
-  Rising demand and pressure on healthcare systems

**520M**  
CVD patients

**19.7M**  
deaths annually

**≈ 10%**  
of total HC cost

# Our approach

## Six real-world clinical interventions (Use Cases).

Pilots will combine a **mix of mature solutions**, tailored to the specific needs of each intervention:

- ✓ Deploy digital solutions
- ✓ Enhance diagnostic imaging
- ✓ Enhanced recovery protocols
- ✓ Apply novel biomarkers
- ✓ Use wearable devices
- ✓ Leverage predictive analytics and AI-driven tools



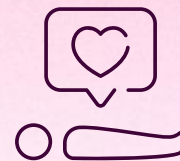
## The six Use Cases (I)



**Transforming atrial fibrillation (AF) management**  
Earlier detection, continuous monitoring after ablation, and stronger patient empowerment

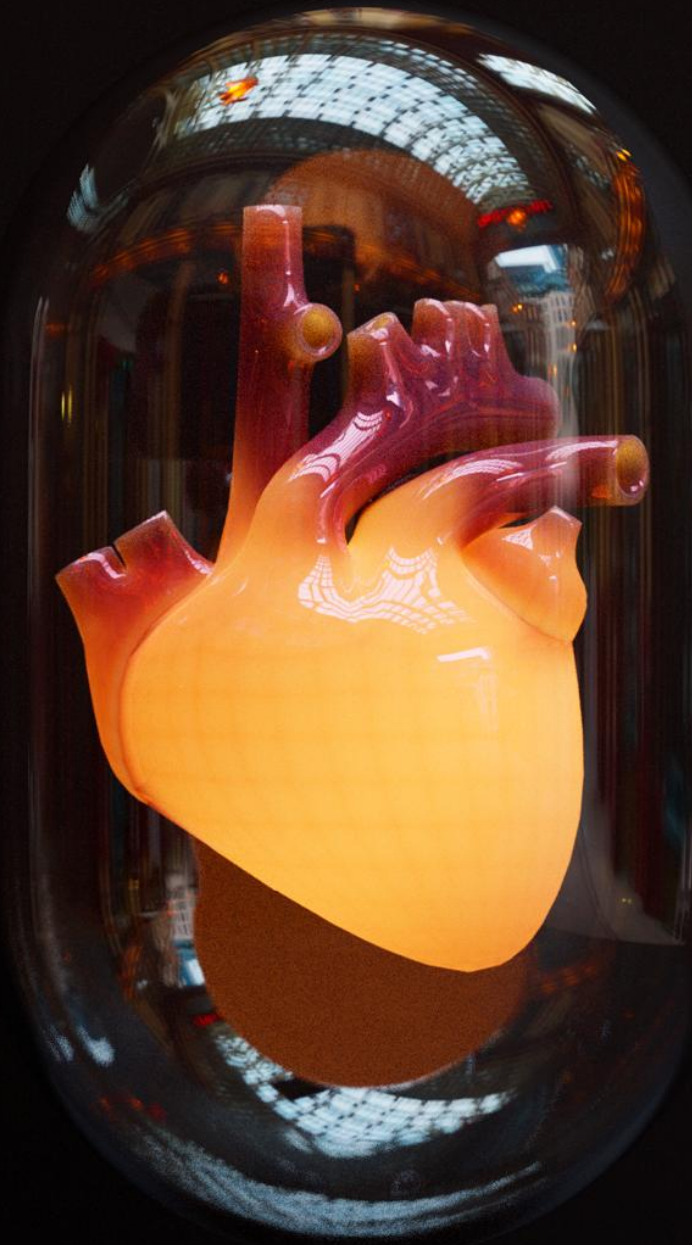


**Enhancing cardio-oncology care coordination**  
Earlier detection of cardiac complications, improved adherence, and seamless collaboration across specialties



**Redefining cardiac surgery recovery**  
Prehabilitation and early recovery protocols to accelerate healing, reduce complications, and shorten hospital stays

## The six Use Cases (II)



### **Advancing cardiac MRI for INOCA diagnosis**

Faster, more accurate and patient-friendly diagnostic pathways with automated imaging



### **Optimizing heart failure (HF) management**

Digitized guidelines, predictive models, and advanced monitoring for proactive care



### **A holistic pathway for CVD**

An integrated care model covering prevention, acute treatment and long-term follow-up for AF, CAD and HF

# Expected benefits



## For patients

- Timely diagnosis
- Fewer complications
- Shorter hospital stays
- Personalised treatments.



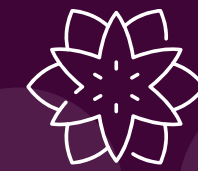
## For HCPs

- Decision-support tools
- Streamlined workflows
- Reduction of admin burden
- Enhance clinical practice



## For HC systems

- Lower readmissions rates
- Fewer hospitalizations
- More efficient use of resources

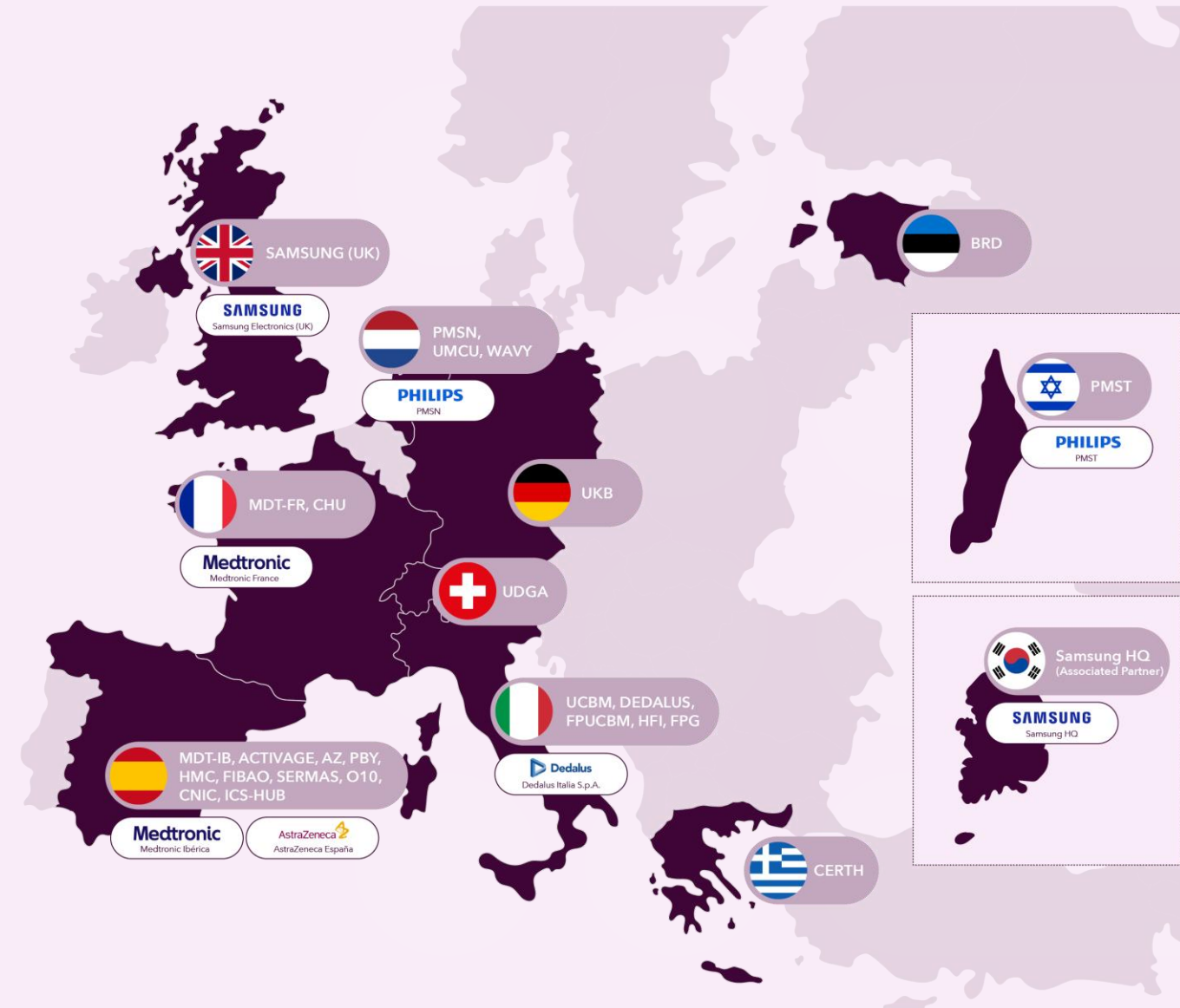


## For society

- Stronger digital engagement
- Fostering empowerment
- Improved experience

# The consortium

GRACE unites **27 partners** from **11 European countries** in a unique collaboration. By bringing together **hospitals, academia, patient associations and industry leaders**.





# Grace<sup>®</sup>

Learn more: [www.grace-ihl.eu](http://www.grace-ihl.eu)

Contact us: [pct@grace-ihl.eu](mailto:pct@grace-ihl.eu)



[GRACE project \(IHI\)](#)



[@GraceIHI](#)



Co-funded by  
the European Union

This project is supported by the Innovative Health Initiative Joint Undertaking (IHI JU) under grant agreement N° 101194778. The JU receives support from the European Union's Horizon Europe research and innovation programme and COCIR, EFPIA, Europa Bio, MedTech Europe, and Vaccines Europe.

Funded by the European Union, the private members, and those contributing partners of the IHI JU. Views and opinions expressed are however those of the author(s) only and do not necessarily reflect those of the aforementioned parties. Neither of the aforementioned parties can be held responsible for them.